

MDD Series

Pulse Vacuum Steam Sterilizer

Safe · Efficient · Stable · Reliable



MDD Series Pulse Vacuum Sterilizer employs intense heat of saturated steam to build up pressure within the chamber and so kill bacterial spores by denaturing and coagulate their cell proteins through hydrolysis, then dry the loading with heat from jacket, while vacuuming out the humidity inside chamber.

Apply

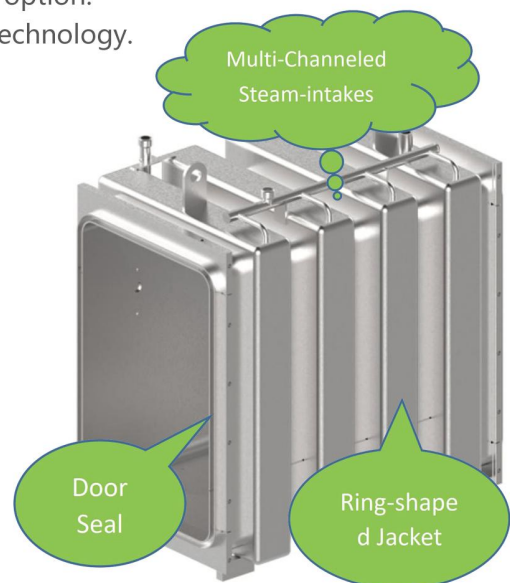
MDD Series are very flexible for multi-purpose sterilization in pharmaceutical industry, biological laboratory, SPF animal laboratory, from garments, tools, porous apparatus, rubbers, aluminum caps, to liquids, and etc.

Features

- Ring-shaped jacket structure, higher strength and stability.
- Multiple steam access, multi-section heating-up, more uniform temperature distribution, less steam consumption.
- Three kinds of working processes: gravity, pre-vacuum, pulse-vacuum.
- Hinged door, vertical sliding door, horizontal sliding door for option.
- Food grade door seal, hollow structure, compressed air seal technology.
- With pressure safety lock, and interlock function.
- Bio-seal, condensate inactivation for option.

Design Parameters

	Jacket	Chamber
Design Pressure (MPa):	0.3	-0.1/3
Design Temperature(°C):	144	144
Working Pressure(MPa):	0.25	-0.1/0.25
Max.Working Temperature(°C):	139	139
Safety Work Pressure(MPa):	0.28	0.28

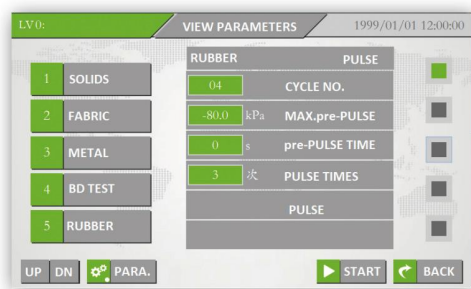


Company Profile

AIKSMED is an expert manufacturer of Autoclaves and Sterilizers, ranging from Cassette Autoclaves for dental & ophthalmology clinics, Biological Laboratory Steam Sterilizers for research organizations, Saturated Steam Sterilizers for garments, tools, and Superheated Water Cascade Sterilizers for pharmaceutical industries. Based upon over 30 years' experience in the autoclave manufacturing field, AIKSMED takes advantage of R&D in technology, to improve the sterilizing solutions, meanwhile developing washing and disinfection solutions. Nowadays AIKSMED products range is not limited to sterilizers and autoclaves, but also includes Washing Machines, Biological Indicator Evaluation Resistometers (BIER/CIER), Automatic Steam Quality Monitors, Temperature & Pressure Validation System.

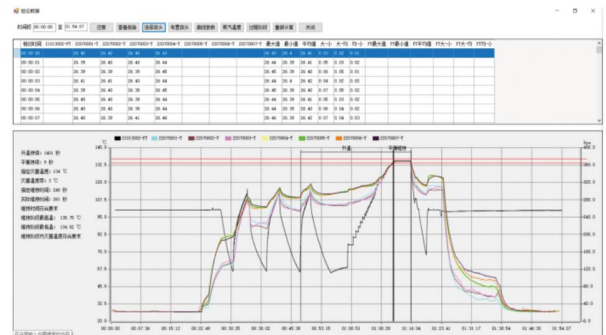
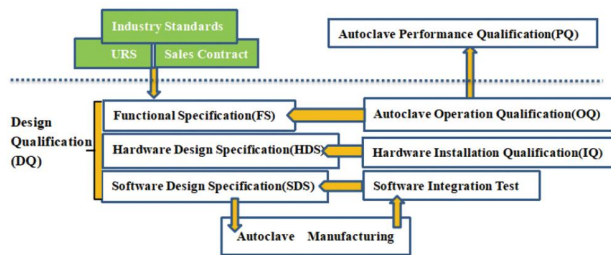
Control System

- Comply with FDA 21CFR Part11 and EN285 requirements.
- Multiple conventional cycles, users can create new cycles to meet actual process needs.
- Rich functional configuration, including pulse mode, drying mode, intake steam adjustment, and etc.
- Convenient interface design, users can quickly master and operate proficiently.
- 5-level authority management, customized for user needs.
- Intelligent fault alarm and information prompt.
- Support multiple communication protocols such as OPC UA and Modbus TCP.



User Requirement Traceability Matrix & Validation Service

Complete documentation and quality assurance system, professional after-sales service to ensure the delivered equipment in complies with GMP and users' process requirement.



Guarding Sterilization Performance: Automatic Steam Quality Monitor, VAPOR-4.0

Fully automatic operation, the first manufacturer in China,
 Meeting requirements of EN285, HTM2031 and China YY/T1612-2008,
 AIKSMED patented product,
 Mobile, multi-point & online real-time monitoring and printing steam quality:
 steam superheat, steam dryness, Non-Condensable Gas Contents(NCGs),
 Ensuring the sterilization effect and drug output.



(VAPOR-4.0)

Tech Para.		Volume (M3)	Chamber (W*H*Dmm)	Overall (W*H*Dmm)	Steam (KG)	Water (KG)	CA (L)	Power (KW)	N/W KG
Model									
Hinged Door	MDD-0.25D/S	0.25	500×500×1000	1280×1910×1340	18	120	50	1.2	650
	MDD-0.36D/S	0.36	600×600×1200	1280×1910×1540	22	150	60	1.2	800
	MDD-0.6D/S	0.6	610×910×1200	1280×1910×1540	35	300	100	2.6	1200
	MDD-0.8D/S	0.8	610×910×1500	1280×1910×1790	45	350	100	2.6	1400
	MDD-1.0D/S	1.0	610×910×1800	1280×1910×2100	55	400	100	2.6	1600
	MDD-1.2D/S	1.2	680×1180×1500	1460×2000×1800	65	500	120	4.2	1700
	MDD-1.5D/S	1.5	680×1180×1900	1460×2000×2100	80	600	120	4.2	1850
	MDD-2.0D/S	2.0	1000×1200×1700	1780×2100×2020	100	800	150	4.5	2400
Vertical Sliding Door	MDD-0.3D/S-V	0.3	675×675×660	1300×1900×1000	18	120	50	1.1	800
	MDD-0.45D/S-V	0.45	675×675×1000	1300×1900×1340	27	150	60	1.1	900
	MDD-0.55D/S-V	0.57	675×675×1250	1300×1900×1590	35	300	100	1.6	1000
	MDD-0.65D/S-V	0.68	675×675×1500	1300×1900×1840	40	350	100	1.6	1200
	MDD-0.75D/S-V	0.77	675×675×1700	1300×1900×2040	45	350	100	2.5	1300
Horizontal Sliding Door	MDD-1.0D/S-H	1.0	680×1180×1250	2200×2000×1750	55	400	100	2.6	2100
	MDD-1.2D/S-H	1.2	680×1180×1500	2200×2000×2000	65	500	120	4.2	2300
	MDD-1.5D/S-H	1.5	680×1180×1900	2200×2000×2400	80	600	120	4.2	2500

Remarks: Please contact AIKSMED or Distributors if special dimension needed.

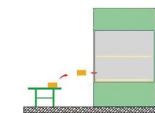
Utility Pressure

Saturated Plant Steam: 0.3~0.5Mpa
Water: 0.15~0.3Mpa

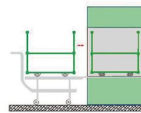
Saturated Pure Steam: 0.25~0.35Mpa;
Compressed Air: 0.5~0.7Mpa



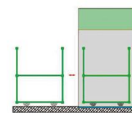
Loading Method



Type A: Loading Shelves



Type B: Inner Cart + Outer Car



Type C: Inner Cart Only



AIKSMED

JIANGSU AIKSMED EQUIPMENT CO., LTD

ADD: Xinlian Advanced Manufacturing Industry Park, Daxin Town, Zhangjiagang City, Jiangsu Province, China

Email: sales@aiksmmed.com

Tel: 0086-512-5876-3098

www.steam-autoclave.com